

All on 4,5,6, etc.

Immediate Loaded Temporary Hybrid:
Pre-Surgery to Day of Surgery Procedure

■ Introduction

In a simplified explanation, all that is needed for the immediate loaded temporary hybrid is a denture and surgical guide. The day of surgery, once the surgeon has placed the implants and sutured the abutments, the dentist assisted by the technician will load the temporary hybrid. The technician will then finish the hybrid in approximately one hour at the surgeon's office.

■ 1st Appointment

□ Existing Denture

- i. Good Condition
 - a. Send to lab to make surgical guide (Approximately 2 hours).
 - b. This is all the patient needs for surgery.
- ii. Reline, replace.

□ Partially Edentulous/Full Complement

- i. Take upper and lower impressions.
- ii. Take bite registration.
- iii. Take shade.
- iv. Pictures and fill out Rx.
- v. Wax try-in with teeth (*fig. 1*).
- vi. Finished denture with surgical guide (*fig.2*).



Fig.1



Fig.2

□ Patient's Expectation

- i. Don't promise they will leave surgeon's office with temporary hybrid.
 - a. Unable to get proper torque on implant.
 - b. Insufficient bone.
 - c. Heal 3-6 months then load.
- ii. Overdenture bar for final.
 - a. Extreme bone loss, denture flange needed for support of lips.
 - b. High smile line denture needed to hide transition zone.

□ Day of Surgery

Surgeon

- i. Teeth extracted.
- ii. Bone reduced to allow for 15-18mm of space.
- iii. Implants placed.
- iv. Straight and angled abutments placed for proper screw access holes.
- v. Healing caps placed and sutured (*fig. 3*).



Fig. 3

Dentist/Technician

*** Miracle will provide everything for immediate load except parts.**

- i. Place denture in patients's mouth to verify bite and fit (trim as needed) (*Fig. 4*)
- ii. Bite registration inside denture to mark abutments (*fig. 5*).
- iii. Miracle will drill holes to accommodate temporary titanium cylinders.



Fig.4



Fig.5

- iv. Place temporary titanium cylinders on implants one at a time. Miracle will adjust denture and length of cylinders until proper vertical is established for final pick up (*fig. 6*).
- v. Rubber dam placed over temporary titanium cylinders.
- vi. Cotton placed in screw access holes - *Leave fluffy*. (*fig. 7*)
- vii. Acrylic added to cylinders and dentures, place in mouth to proper vertical, wipe excess acrylic off holes, let set for four minutes (*fig. 8*).
- viii. Remove cotton and unscrew hybrid (*fig. 9*).
- ix. Miracles technician will finish and polish temporary hybrid in about 45 minutes.
- x. Screw temporary hybrid in , check bite, fill screw holes. Take x-ray of final hybrid. (*fig. 10*)



Fig. 6

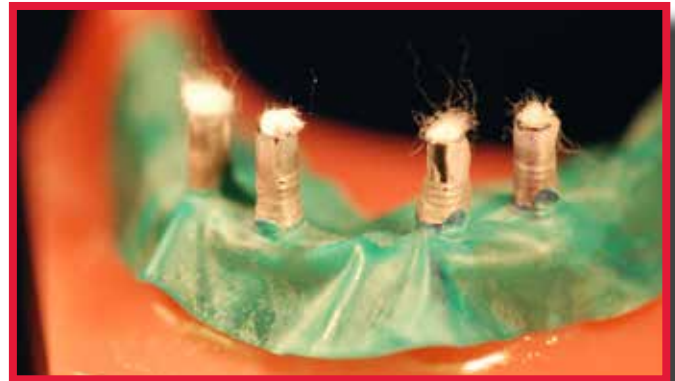


Fig. 7



Fig. 8

* Upper and lower hybrid

1. Upper implant first
2. Extract lower teeth, lower immediate denture needed for vertical loading of upper hybrid denture.
3. Load upper hybrid then surgeon continues with lower implant placement while Miracle finishes upper hybrid.
4. Final integration is approximately 3 months for mandible, 4-6 months for maxillary.

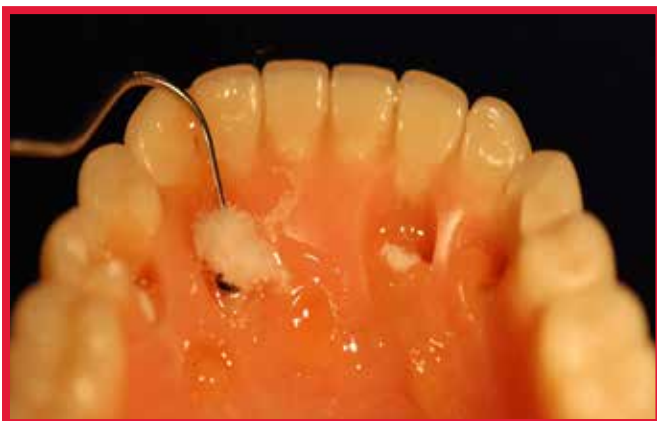


Fig. 9



Fig. 10

All on Four All Inclusive Pricing

Using One Stop Final Hybrid Technique

Everything Included:

1. Immediate denture with economy teeth
 2. Surgical guide (non-guided)
 3. Day of surgery (retrofit chairside)
 4. Two printed nightguards
 5. Restorative lab parts (i.e., Analogs, long screws)
 6. Titanium bar with high quality teeth
 7. No extra charge for double arch , i.e., \$200 each
 8. Cases billed out half day of surgery; second half at final try-in
 9. Simplifies, no hidden extras, and saves money
- \$4,900**

Miracle Hybrid

Milled Titanium
or Tylor Bar with
Crystal Ultra
+\$1,800

Retreads

Use Original
Titanium Bar with
High Quality Teeth
+\$1,200

Zirconia Hybrid

Milled Zirconia
with Porcelain
Stained and Glazed
+\$2,800

Miracle

Use Original Bar
with Milled
Crystal Ultra
+\$2,700

Implant Verification Guide +\$100

NOTE: Surgeries 40 miles distance - \$200+

If GP doesn't finish case with Miracle Dental, there will be an additional fee of \$1,200

Bar w/Teeth in Wax = 2 weeks, plus 2 days p/u & delivery

Finish = 3 days, plus 2 days p/u & delivery

SCHEDULE

	Doctor	Miracle
1st Appointment	Take impression, bite	Pour models, mount set teeth in wax (3 days)
2nd Appointment	Try-in denture get patient's approval	Finish dentures, surgical guide (5 days)
3rd Appointment	Surgical delivery set appointment with Miracle	

**Please allow 2 days for pick-up and delivery*